

Automated DNA isolation system

GENE PREP STAR PI-80X



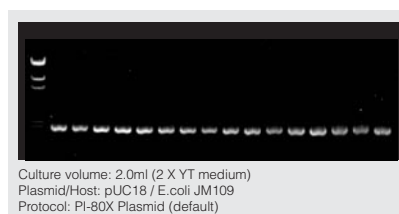
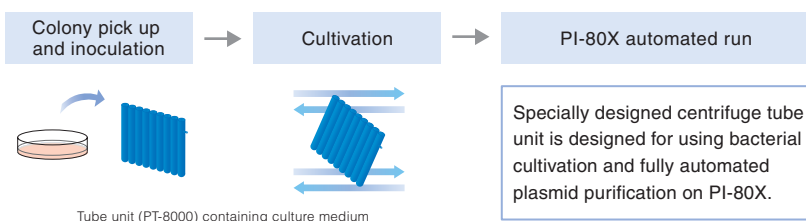
GENE PREP STAR PI-80X is a fully automated plasmid and genomic DNA isolation system. High performance centrifuge and robotics technology accelerate genome research.

Key features

- Full automation from collecting cells to dissolving purified plasmid
- Easy operation by touch screen
- Purify DNA from variety of origins
- Maximum throughput number is 48-192 samples at a single run
- Low operating cost

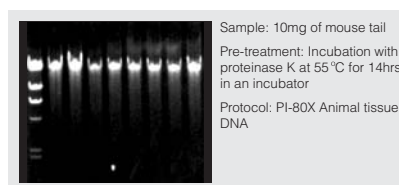
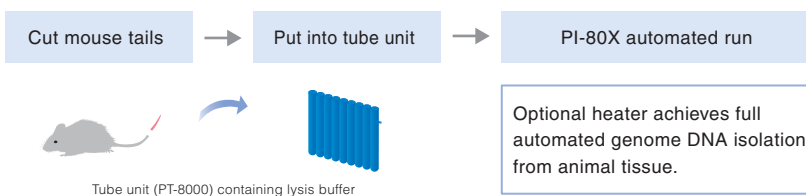
Plasmid DNA protocol

• Escherichia coli

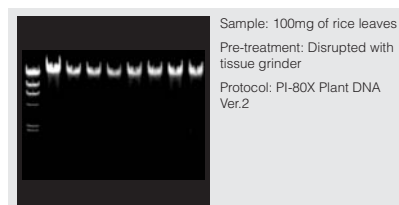
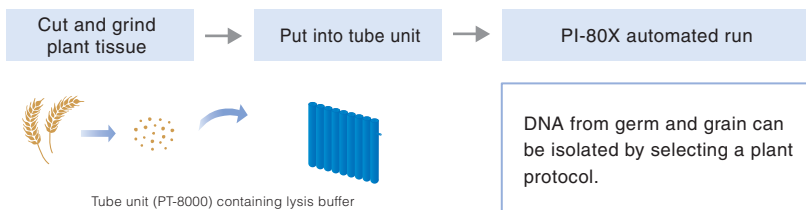


Genomic DNA protocol

• Animal tissue



• Plant material





Specification

Model	GENE PREP STAR PI-80X
Maximum samples per run	48 (six 8-hole tube units)
Processing tube	Specially designed 8-hole tube unit
Protocols	Plasmid, Animal tissue DNA, Plant tissue DNA (two versions) (One protocol is included in instrument price)
System components	Centrifuge 6 bucket swing rotor maximum speed of 3,900rpm (2,500G) Dispenser Six(6) channels, syringe model Tube transfer..... Two (Y and Z) axis robot and 1-axis(X) Agitator unit Liquid transfer..... Decantation
Electric control	Internal microprocessor
Screen	LCD touch screen panel
Power supply	Voltage , AC 100 V; Frequency, 50/60 Hz; Capacity, 1.5 KVA (Able to operate at 115 or 230 V by using external transformer)
Dimension	W 720 X D 670 X H 1535 (mm) / W 28.3 X D 26.4 X H 60.4 (inch)
Weight	240kg / 530lbs



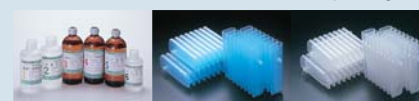
Touch screen panel



Inside of PI-80X



Dispensing Line



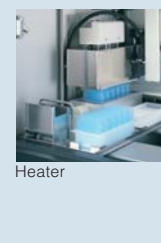
Consumables

Protocols

Protocol	Method	Sample volume	Yield	Purity (OD260/280)
Plasmid	Modified alkaline	0.5 - 3.0ml	8μg/1.5ml	1.7-1.9
Animal tissue DNA	Modified phenol	Max 30mg (Mouse tail)	20μg/30mg (Mouse tail)	1.7-1.9
Plant DNA Ver.1	Modified CTAB	Max 300mg (Arabidopsis)	20μg/300mg (Arabidopsis)	1.8-2.0
Plant DNA Ver.2	Modified CTAB	Max 100mg (Rice)	10μg/100mg (Rice)	1.8-2.0



Tube stacker



Heater



Dispensing line

Option

● **Tube stacker**

Able to set maximum 192 samples on the tube stacker

Unit	Tube stacker: TS-200
Capacity	192 samples:(2 tube protocol) 8-hole tube unit x 6 units/rack X 8 racks
Dimension	W 450 X D 670 X H 1330 (mm) W 17.8 X D 26.4 X H 52.4 (inch)
Weight	110kg / 240lbs

● **Heater**

Use to shorten DNA dry-up time and accelerate sample digestion time

Unit	Heater
Heat source	Infrared ceramic heater
Temperature	Able to set 3 different temperature (factory setting) Range: max. 65°C, min. ambient plus 5°C

● **Optional dispenser**

To the standard 6 dispensing lines, 3 or 6 lines can be added as an option. Additional dispensing lines eliminate tedious setup such as tube wash and save reagents for multi protocols operation.

Protocol	Addition of 3 dispensing lines	Addition of 6 dispensing lines
Number of dispensing lines (Standard: 6)	9	12

Protocol	Number of dispensing lines (Standard: 6)	
	without lysis of tissue	with lysis of tissue*
Plasmid DNA	6	
Animal tissue DNA	4	6
Plant DNA Ver.1 (Arabidopsis)	6	7
Plant DNA Ver.2 (Rice)	8	9
Plasmid DNA + Animal tissue DNA	9	12
Plasmid DNA + Plant DNA Ver.1	9	10
Plasmid DNA + Plant DNA Ver.1	11	12



KURABO INDUSTRIES LTD.
Bio-Medical Department

4-31, 2-chome, Kyutaro-Machi, Chuo-Ku, Osaka 541-8581, Japan
Phone: +81-6-6266-5010
FAX: +81-6-6266-5011
Email: bio@ad.kurabo.co.jp
URL: http://www.kurabo.co.jp/english