

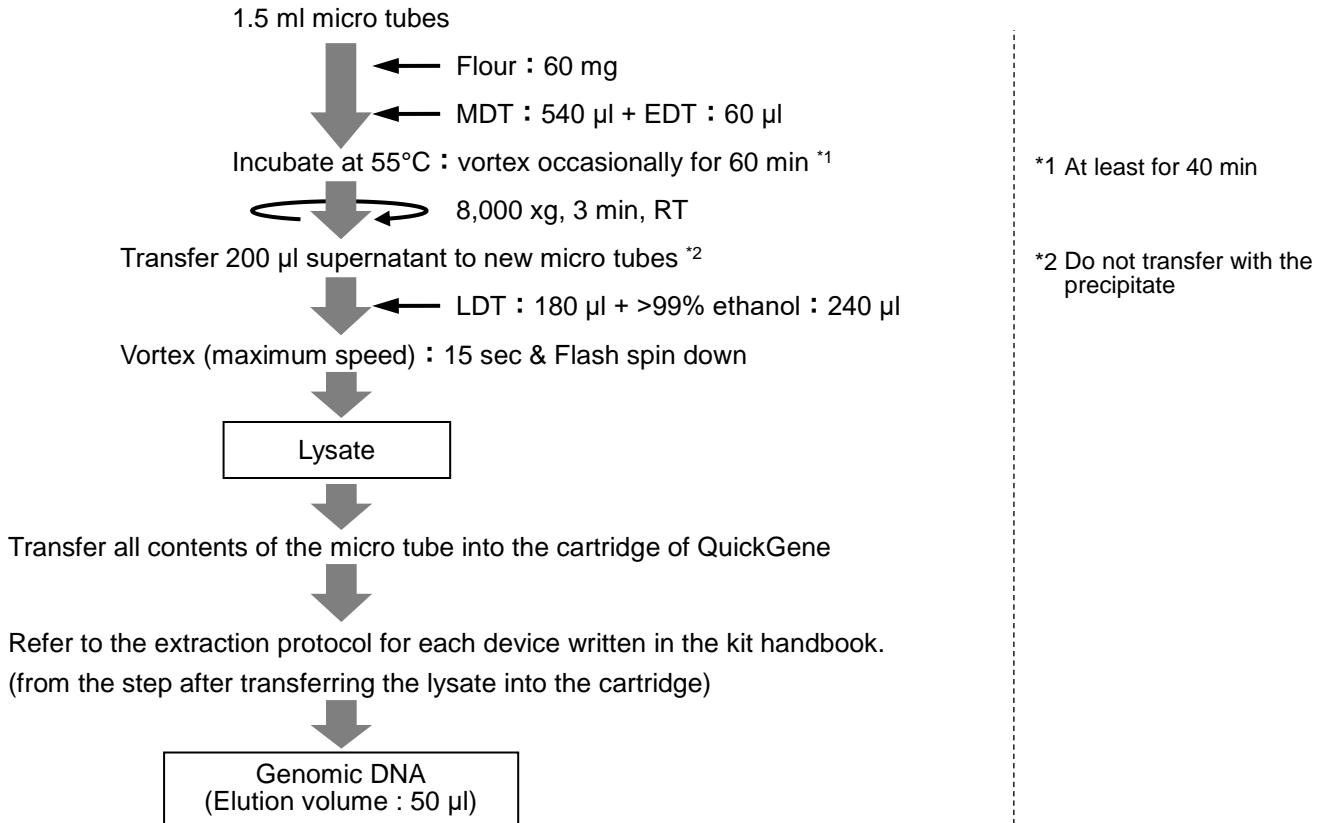


5. Genomic DNA Extraction from Food

DC-1

Genomic DNA Extraction from Flour

Protocol



Results

Electropherogram

M M 1 2 3



M : λ -Hind III
1 : Genomic DNA
2 : Twofold dilution of Genomic DNA
3 : Fourfold dilution of Genomic DNA

The yield of genomic DNA

Sample	No.1
Yield (μg)	0.3

Common protocol is usable for the following

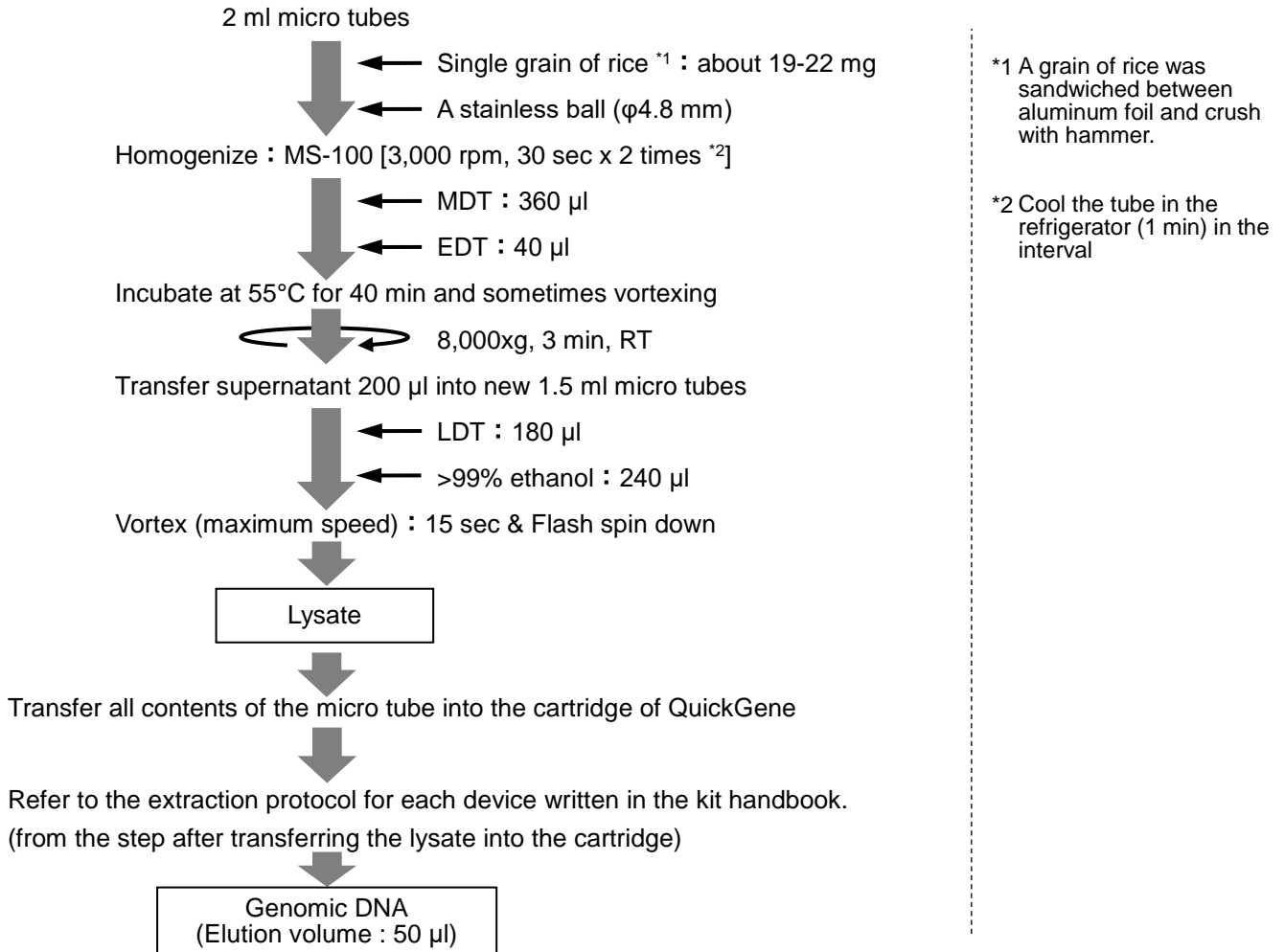
No Data

Depending on sample and storage conditions, nucleic acid may not be extractable.
Therefore, we cannot guarantee accurate data.
The extracted nucleic acid contains unintended acid (ex: when extracting DNA, RNA is also extracted).

DC-2

Genomic DNA Extraction from Rice

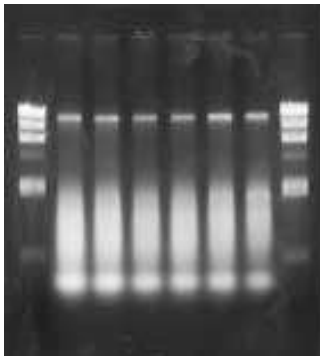
Protocol



Results

Electropherogram

M 1 2 3 4 5 6 M



M : λ -*Hin* d III Fragment
1 : musenmai (unwashed rice)
2 : musenmai (unwashed rice)
3 : clean rice
4 : clean rice
5 : brown rice
6 : brown rice
M : λ -*Hin* d III Fragment

Common protocol is usable for the following

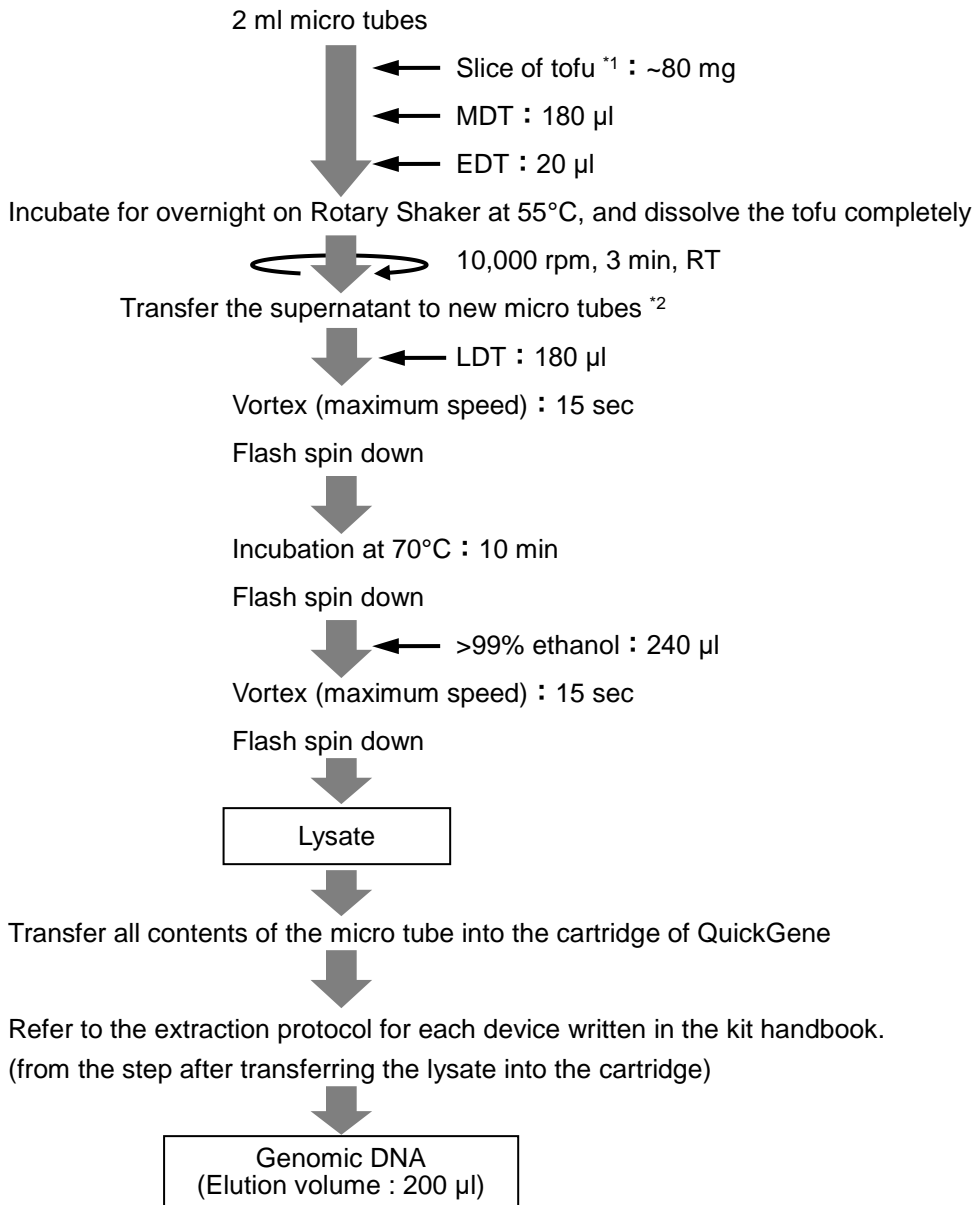
No Data

Depending on sample and storage conditions, nucleic acid may not be extractable.
Therefore, we cannot guarantee accurate data.
The extracted nucleic acid contains unintended acid (ex: when extracting DNA, RNA is also extracted).

DC-3

Genomic DNA Extraction from Tofu

Protocol

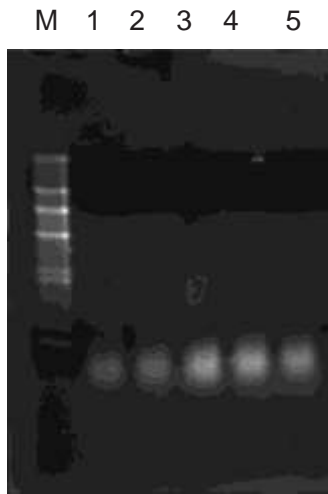


*1 Tofu, pinched with paper towel overnight, is then drained.

*2 Oil content floating on supernatant is not.

Results

Electropherogram



M : marker
1 : Tofu 5 mg
2 : Tofu 10 mg
3 : Tofu 30 mg
4 : Tofu 50 mg
5 : Tofu 80 mg

The yield of genomic DNA

Sample amount (mg)	5	10	30	50	80
Yield (ng/μl)	42.81	104.85	254.18	498.0	394.3

Protein contamination : A260/280

Sample amount (mg)	5	10	30	50	80
A260/A280	1.92	1.87	1.93	2.07	2.02

Chaotropic salt contamination : A260/230

Sample amount (mg)	5	10	30	50	80
A260/A230	1.29	1.35	1.98	2.05	1.93

Common protocol is usable for the following

No Data

Depending on sample and storage conditions, nucleic acid may not be extractable.
Therefore, we cannot guarantee accurate data.
The extracted nucleic acid contains unintended acid (ex: when extracting DNA, RNA is also extracted).