

## Specification

Product	QuickGene-Auto12S	QuickGene-Auto24S
Throughput	1-12	1-24
Protocol	Blood DNA, Tissue DNA, Plasmid DNA, Blood Cell RNA, Tissue RNA, Cell RNA	
Processing time (ex.)	Blood DNA.....25 min Plasmid DNA.....20 min* Tissue RNA.....30 min*	Tissue DNA.....30 min* Blood Cell RNA.....40 min* Cell RNA.....25 min*
DNA/RNA storage tubes	1.5 ml micro tubes, 2 ml micro tubes	
Operating method	Touch Screen	
UV lamp	Yes	
Power Supply	AC 100 – 230 V	
Dimensions	W48 x D62 x H59 cm	W83 x D62 x H60 cm
Weight	55 kg	80 kg

\*After pre-treatment of samples.

## Specific Isolation Kits

- Appropriate kit selectable depending on various samples.
- Select the desired kit(s) and order it(them) separately.

	Samples	Isolation kits/Reference Code	Reactions
For DNA isolation	Human blood Animal blood	QuickGene-AutoS DNA Blood Kit/ AS-DB	48
	Animal tissue Plants Cultured cell	QuickGene-AutoS DNA Tissue Kit/ AS-DT	48
	<i>E. coli</i> (Plasmid)	QuickGene-AutoS Plasmid Kit/ AS-PL	48
For RNA isolation	Leukocytes separated by Ammonium chloride Erythrocytes of whole blood or Ficoll fraction	QuickGene-AutoS RNA Blood Kit/ AS-RB	48
	Animal tissue	QuickGene-AutoS RNA Tissue Kit/ AS-RT	48
	Cultured cell Plants <i>E. coli</i>	QuickGene-AutoS RNA Cultured Cell Kit/ AS-RC	48

\*The kits are not supplied with QuickGene-Auto12S or QuickGene-Auto24S.

**KURABO**

**Automated Nucleic Acid Isolation Device**  
DNA/RNA From Varied Samples

# QuickGene - Auto12S

# QuickGene - Auto24S



\*For Research Use Only

\*Design and specifications are subject to change without previous notice.

\*All brand names and product names are trademarks or registered trade marks of their respective companies.



**KURABO KURABO INDUSTRIES LTD.**  
Advanced Technology Division, Bio-Medical Department

14-30, Shimokida-cho, Neyagawa city, Osaka 572-0823, Japan  
Phone: +81-72-820-3079 FAX: +81-72-820-3095  
Email: bio@kurabo-grp.com  
www.kurabo.co.jp/bio/English

QuickGene

# -Benchtop device for automated DNA/RNA isolation

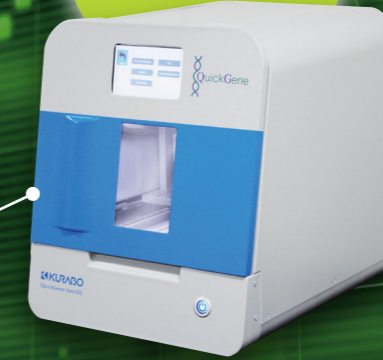
## -Short operation time due to simultaneous processing of multiple samples

The QuickGene series uses a patented porous membrane to realize a quick and high purity, high yield in nucleic acid extraction. QuickGene-Auto12S/QuickGene-Auto24S can isolate DNA from 200 µl of blood samples by full-automatically. Solid sample for DNA isolation can be processed adsorption/washing/DNA collection automatically after manual pre-treatment. Automated the previous manual labor to reduce user's burden and support their high throughput in routine analytical work.

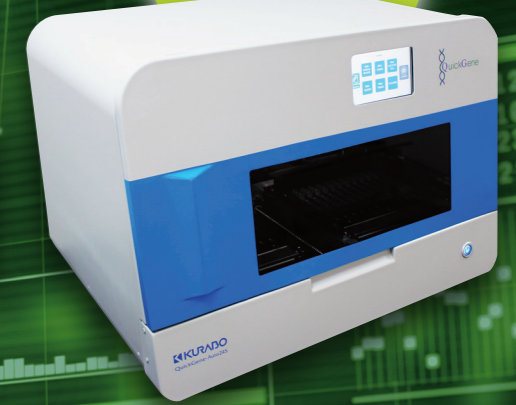
Simultaneous processing of multiple samples



1-12 sample per run  
[QuickGene-Auto12S]



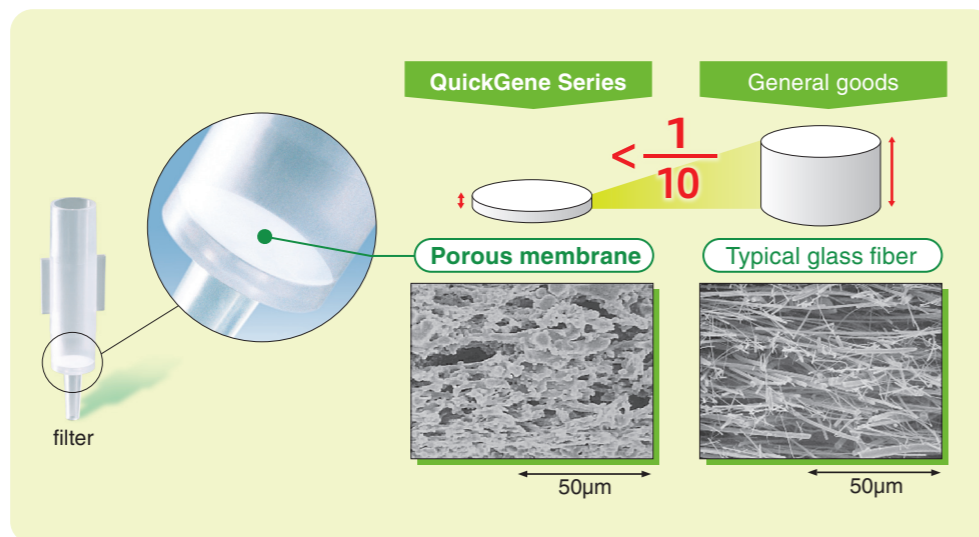
1-24 sample per run  
[QuickGene-Auto24S]



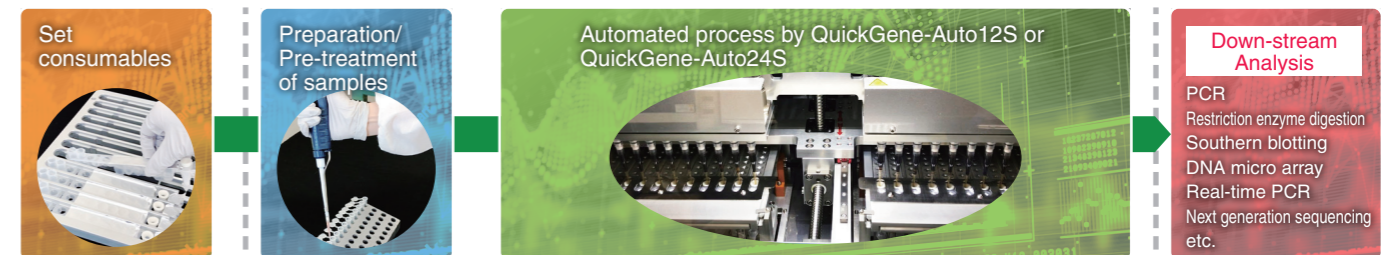
### Patented porous membrane

#### High-purity of DNA/RNA

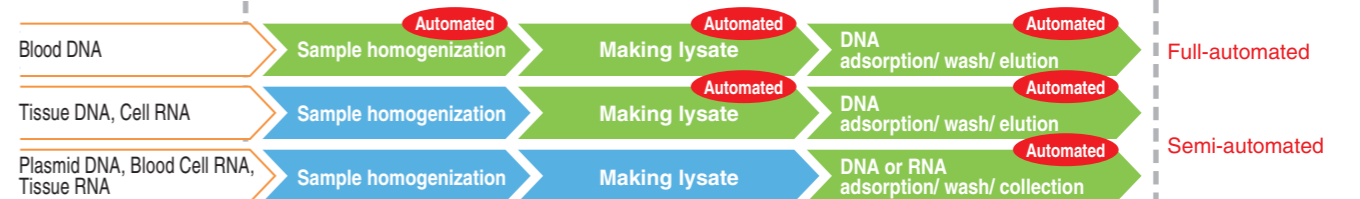
The nucleic acid adsorptive medium used in QuickGene series is a porous membrane developed through application of advanced polymer membrane production technology. It is less than 100 µm thick, making it incomparably thinner than conventional glass fibers. Because of the outstanding adsorptive and desorptive performances of the membrane, nucleic acid can be rapidly and reliably isolated at low pressure without being damage, which realizes high-quality nucleic acid isolation.



### DNA/RNA isolation process



#### Automated process depending on protocols

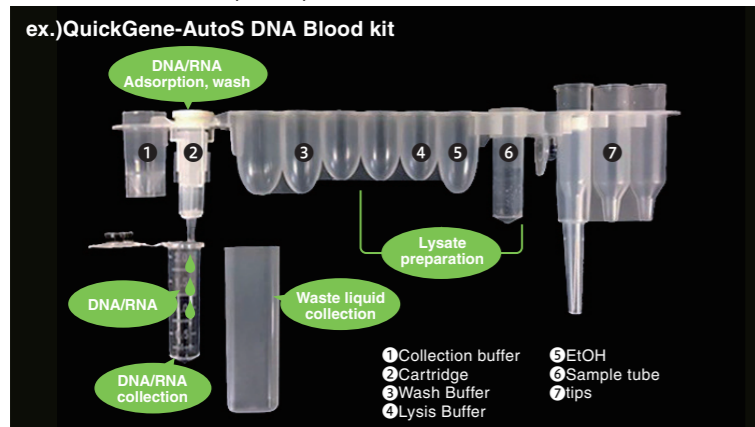
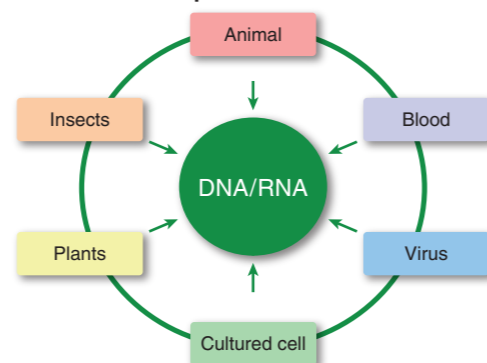


### Isolation kit

QuickGene-Auto12S and QuickGene-Auto24S use pre-filled reagent strips. These strips are supplied in a sealed condition with required reagents for isolation in one strip to reduce the contamination risk. They also contribute to reduce the manual preparation time by the simple specification of taking out from the box and just setting into the device. QuickGene kits are usable for DNA/RNA isolation from various samples such as human, mouse, plants, plasmid etc.



#### For various samples

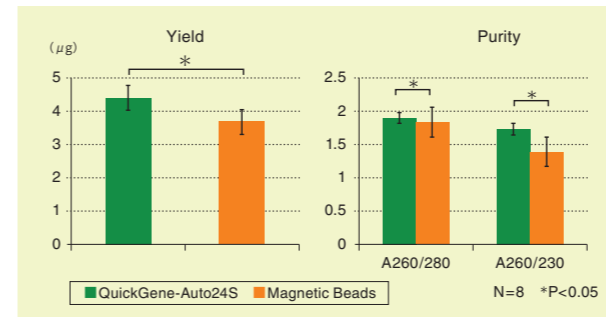


### DNA / RNA isolation result

#### Genomic DNA isolation from 200 µl of whole blood (N=8)

[Sample] 200 µl of whole blood  
[Device] QuickGene-Auto24S  
[Reagent kit] QuickGene-AutoS DNA Blood Kit

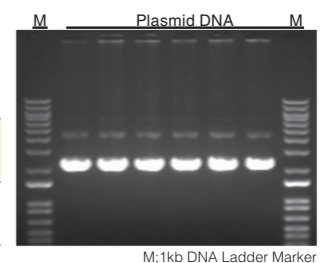
Genomic DNA isolation from 200 µl of whole blood was performed on QuickGene-Auto24S and competitor's DNA extraction system. The data shows that both DNA yield and purity of QuickGene-Auto24S (green bar) were better than competitor's product (orange bar).



#### Plasmid DNA isolation from *E.coli*

[Sample] pBluescript(DH5α)  
[Device] QuickGene-Auto12S  
[Reagent kit] QuickGene-AutoS Plasmid Kit

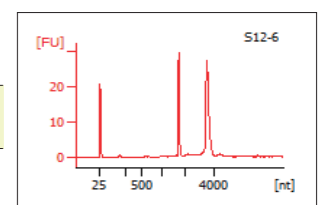
	Yield (µg)	A260/280
QuickGene-Auto12S	23.9	2.09



#### Total RNA isolation from HeLa cell (1x10<sup>6</sup> cells)

[Sample] HeLa cell (1x10<sup>6</sup> cells)  
[Device] QuickGene-Auto12S  
[Reagent kit] QuickGene-AutoS RNA Cultured Cell Kit

	Yield (µg)	A260/280	RIN*
QuickGene-Auto12S	9.8	2.29	10.0



\*RNA integrity number