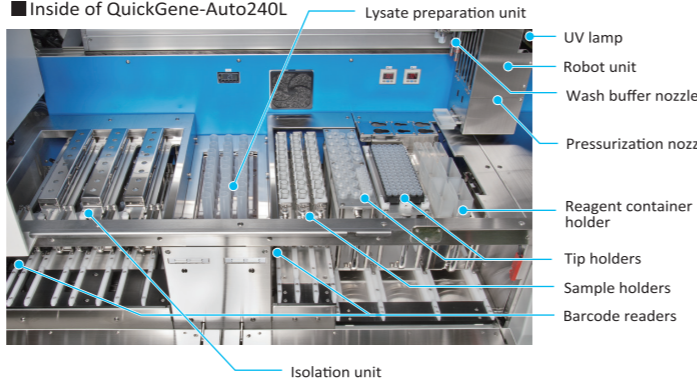


Specifications

Product	Automated Nucleic Acid Isolation System QuickGene-Auto240L		
Throughput	1 to 24 samples per run		
Primary tube sizes	φ16 × 100mm	φ13 × 100mm	φ13 × 75mm (option)
DNA storage tubes	2D barcoded Matrix™ 1.4mL tube or 1.5 mL Microtube* <small>*Need to turn OFF the Barcode mode when using 1.5 mL Microtube</small>		
Protocols	[FULL-AUTO] Whole blood DNA 2mL; Whole blood DNA 1mL Plasma DNA 2mL; Plasma DNA 1mL	[SEMI-AUTO]* Whole blood DNA 2mL; Whole blood DNA 1mL Plasma DNA 2mL; Plasma DNA 1mL <small>*In the case that the lysate made by manual.</small>	
Instrument components	<div style="display: flex; align-items: flex-start;"> <div style="flex: 1;"> <ul style="list-style-type: none"> Robot unit Lysate preparation unit Isolation unit Tip ejector Loading position of sample Loading position of consumable LED light UV lamp Barcode verification system </div> <div style="flex: 1; text-align: center;">  <p>■ Inside of QuickGene-Auto240L</p> <ul style="list-style-type: none"> Lysate preparation unit UV lamp Robot unit Wash buffer nozzle Pressurization nozzle Reagent container holder Tip holders Sample holders Barcode readers Isolation unit </div> </div>		
Electric control	Internal microprocessor		
Operating method	Touch screen		
Power supply	120/220/230/240 V, 50/60 Hz, 10 amp		
Dimensions	W1280 × H990 × D720 mm		
Weight	300kg		

Consumables

Product	Reference Code	Pcs
QuickGene DNA whole blood kit L	DB-L	48 prep
QuickGene Auto240L Consumables Kit	240L-CK	48 prep



For Research Use Only

All brand names and product names are trademarks or registered trademarks of their respective companies.
Design and specifications are subject to change without notice.



KURABO INDUSTRIES LTD.
Bio-Medical Department
14-5, Shimokida-cho, Neyagawa-shi, Osaka 572-0823, Japan
Phone: +81-72-820-3079 FAX: +81-72-820-3095
Email: bio@ad.kurabo.co.jp
www.kurabo.co.jp/bio/English

© 2016 Kurabo Industries Ltd.
'16.10 PP



Automated Nucleic Acid Isolation System

QuickGene - Auto240L

For large volume whole blood DNA extraction



The first fully automated system in QuickGene series

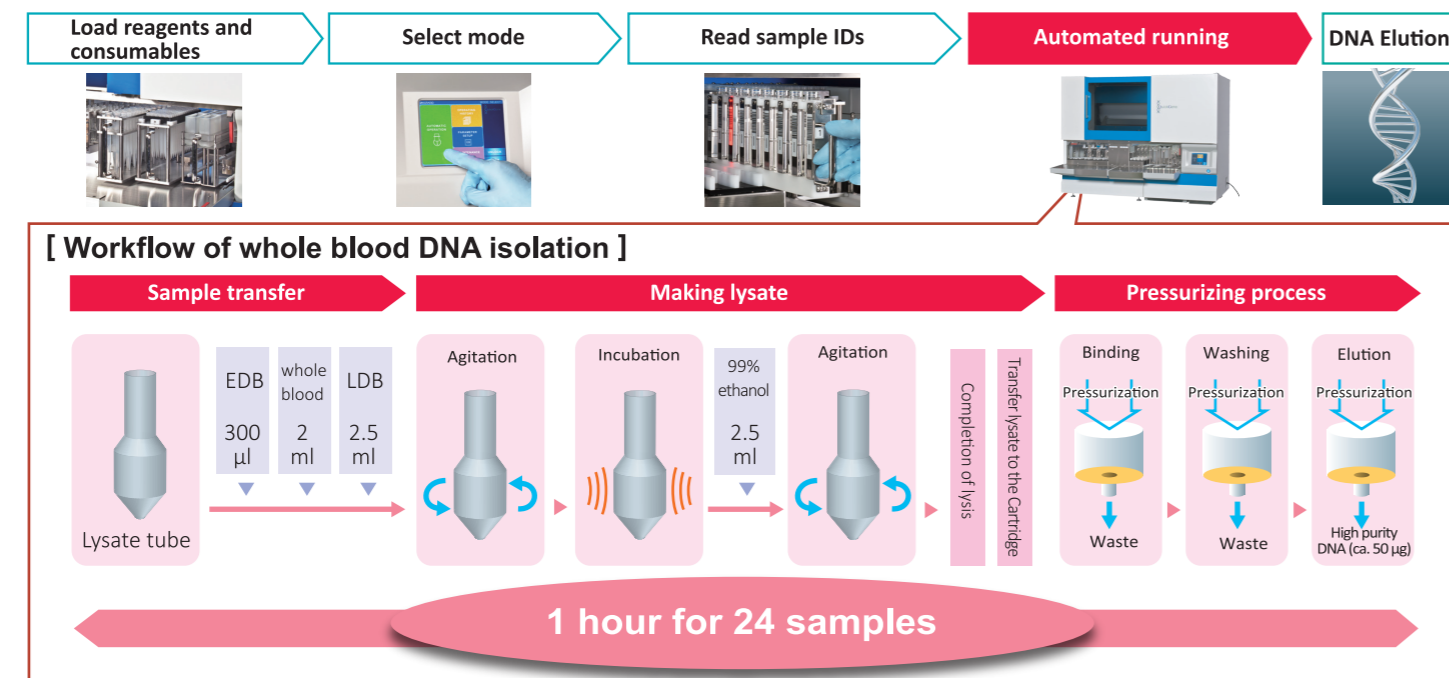
The QuickGene series uses a patented porous membrane to realize a quick and high purity, high yield in nucleic acid extraction. Developed by Kurabo, the new QuickGene-Auto240L is the first and only automated system using QuickGene unique membrane production technology to isolate 2ml whole blood genomic DNA from primary tube samples to final DNA storage tubes. Automated the previous manual labor to reduce user's burden and support their high throughput in routine analytical work.



QuickGene -Auto240L

Automated large volume of whole blood DNA extraction from primary tube samples to final DNA storage tubes to realize a true walk-away operation.

Completely automate the DNA extraction process from primary tube to final DNA storage tubes, ensuring a cross-contamination-free and no human error process.



Max. 24 samples in a single run with the process time in 1 hour.

Automate "Sample transfer from primary tube", "Making lysate", "DNA Binding", "DNA Washing" and "DNA Elution" under samples tracking. Perform DNA isolation of 24 samples within 1 hour.

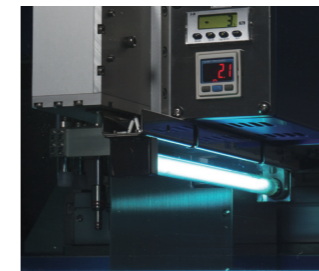
Easy-to-use design

Full color touch screen monitor makes the new system more usable. All labware items, holders are designed to be easy to load to provide a quick and simple operation.



UV irradiation

Built-in UV Lamp enables decontamination and minimizes the sample cross-contamination.



Full barcode reading system

Read and record barcodes on both primary tubes and DNA storage tubes by the internal barcode scanners. Separate log for multiple operator or and multiple applications is allowed. Sample IDs and operation history can be automatically saved by the machine and electronic file can be exported by USB memory stick.



Sample liquid level detection

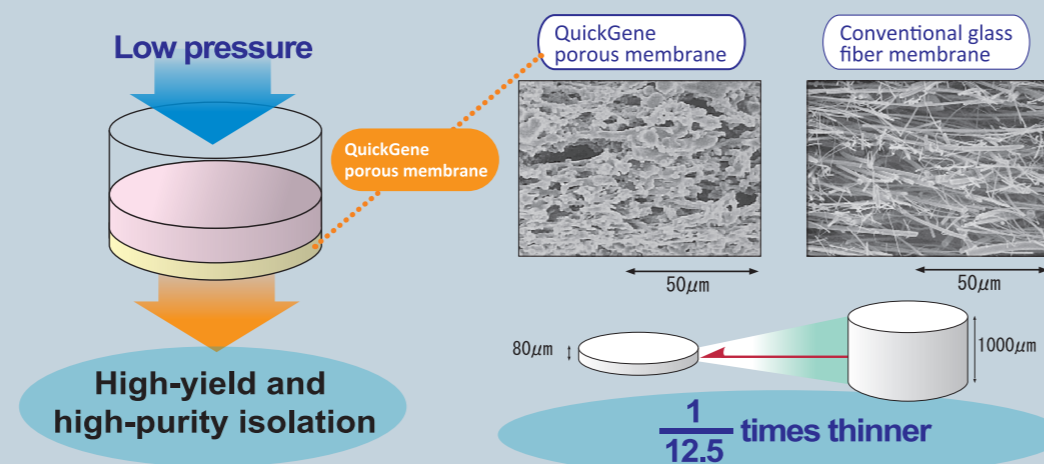
Provide liquid level detection for accurate pipetting using positive air pressure.

Process 2ml of whole blood

Produce high yields and consistently high quality DNA by using reliable QuickGene DNA whole blood kit L. Enable to automated isolation of Approx. 50µg genomic DNA from 2ml whole blood sample, suitable for downstream genetic analyses.

Core technology of patented porous membrane for high-purity isolation

The nucleic acid adsorptive medium used in QuickGene series is a porous membrane developed through application of advanced polymer membrane production technology. It is only 80µm thick, making it incomparably thinner than conventional glass fibers. Because of the outstanding adsorptive and desorptive performances of the membrane, nucleic acid can be rapidly and reliably isolated at low pressure without being damage, which realizes high-quality nucleic acid isolation.



High-yield, High-purity

● QuickGene-Auto240L can consistently isolate high yield of approx. 50µg DNA.

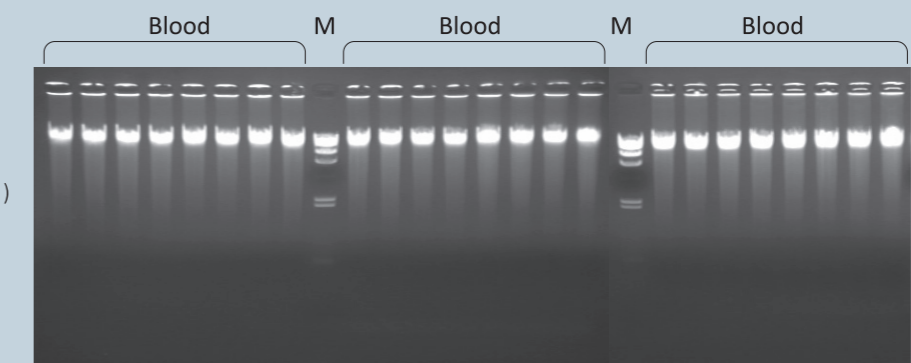
● The isolated DNA can be used directly in PCR, RT-PCR and NGS.

■ Fresh human whole blood (Leukocyte: 8×10^3 cells/µL)

Yield and purity of genomic DNA

DNA Yield (µg)	68.7
Purity (260/280)	1.9
Purity (260/230)	2.1

Average of 24 samples



M: N/Hind III Marker