

**CCM SYSTEMS****AUCOLOR-VP10**

# ***AUCOLOR-VP10***

## **Computer Color Matching(CCM) Systems (For plastic manufacturing)**

Upgrading its CCM capabilities with Direct network to production line for plastic manufacturing, also designed to utilize information at each section( New color making, Production, Quality control) efficiently.

Enhanced basic high-accuracy CCM, stable function of selection of Windows, and display for result calculation on screen enable to make it easier to operate for user.



### **Features:**

#### **1. High-Accuracy CCM**

Both opaque and transparent colors are realized with High-Accuracy CCM.

#### **2. Enhanced quality control database**

Enhanced database including function of AUCOLOR-VP2 systems which equipped with standard color control, and delivery-lot control soft system.

#### **3. Wide network function**

Wide network function allows seamless data into distance place, LAN-network in factory as well.

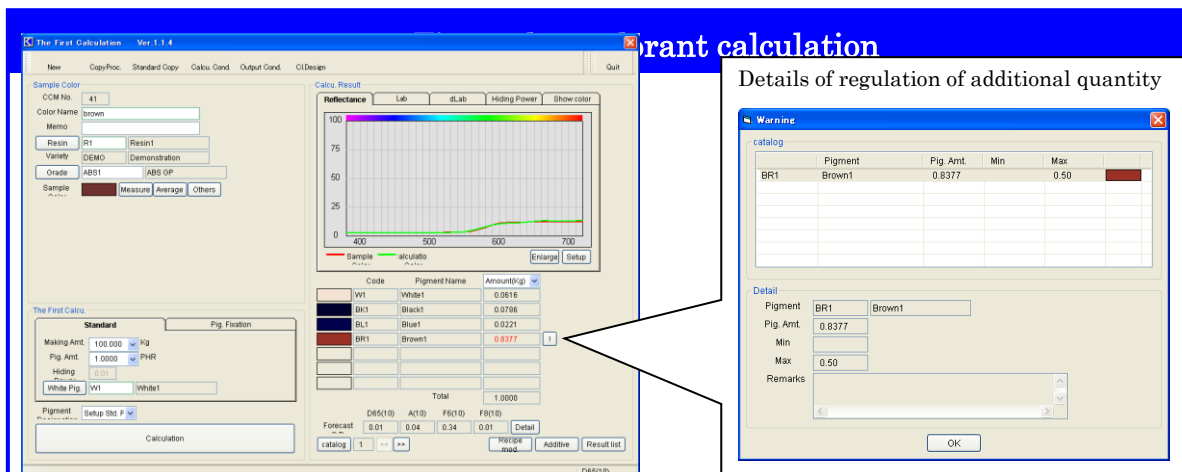
#### **4. High-extensibility into other related devices**

Not only enlarge into operate with production schedule that suits your needs, and perform to support services, but also continually suggesting our related devices.

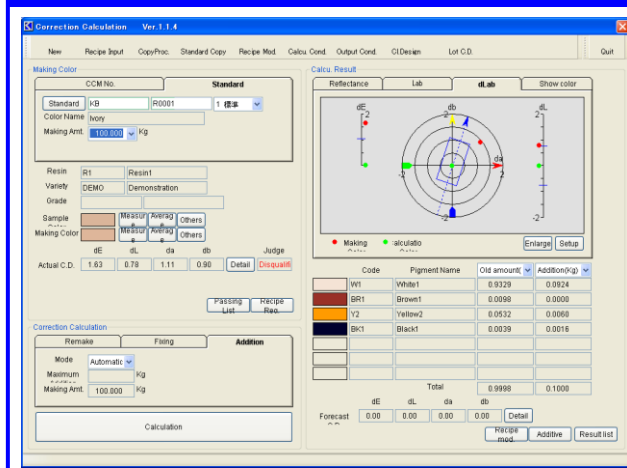
CCM SYSTEMS

# AUCOLOR-VP10

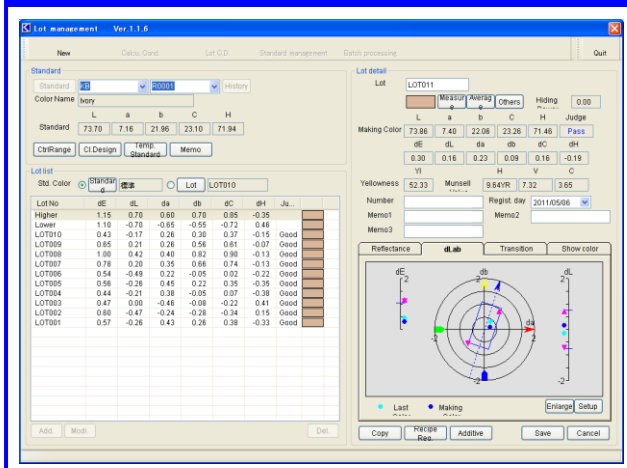
Ex.) View for AUCOLOR-VP10



Correction calculation



Delivery-lot Judgment



Specification

Spectrophotometer

Choose benchtop or portable type

(A picture on listed is CM3600A, maker: KONICA MINOLTA)

\* Product Specification, designs and appearance are subject to change without notice.

**KURABO**

ADVANCED TECHNOLOGY DIVISION.

INFORMATION SYSTEMS SALES DEPARTMENT

COLOR CONTROL INFORMATION SYSTEM SECTION

ADVANCED TECHNOLOGY CENTER

14-30 Shimokida-cho, Neyagawa, Osaka, 572-0823, JAPAN

TEL +81-72-812-5205 FAX +81-72-812-5261

# **KURABO CCM System AUCOLOR-VP10**

## **Outline Introduction**



# CCM Introduction efficiency

## < New color for color matching >

- Expand business chance by shortening time for making sample
- Easy-operate without any technique
- Reduce colorant cost and prevent color issue

## < Production site>

- Color Judgment by numerical value data with not subjectivity
- Speedy Color correction (enhance productivity, minimize reduce material )

## < Quality control >

- Clarify control specification (for customer, in-factory)
- Traceability function (you can trace all past delivery lot color)

# Features

## High-accuracy CCM

Kurabo CCM system has high-advanced function, such as Auto pigment selection and most suitable pigment additional quantity calculation considering film conceal ability and also realize high-accuracy CCM.

## High-Extensibility and related devices

According to your requirement, we can customize CCM system (link to production control system, etc.). Not only perform to support services but also offer our Auto dispensing Systems including other related devices.

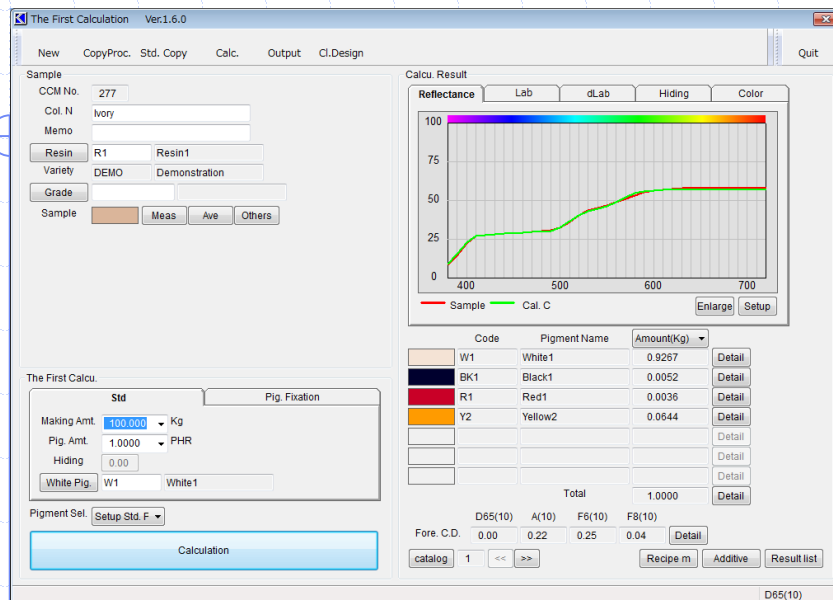
## Enhanced quality control database

Database has enhanced quality control such as standard color data management, Lot management software, it can accurate Pass or not judgment and color management in a long term.

## No limitation for colorant

You can use selected colorant whenever you need after preparing basic data. It is not limitation for using colorant.

# New color CCM(1)



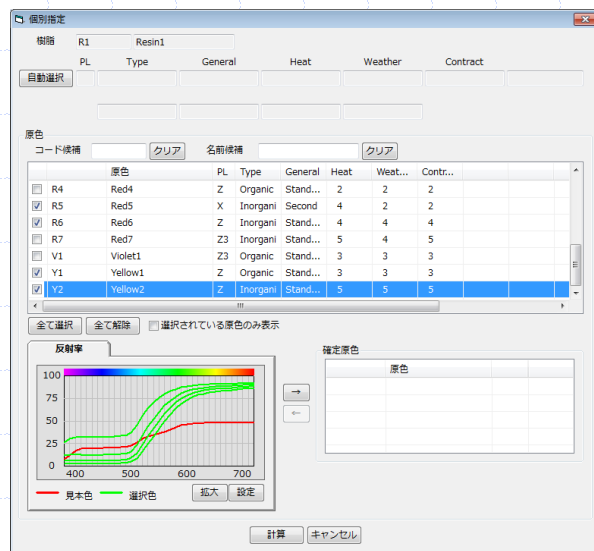
## First CCM Calculation

Specify reflectance, quantity, number of colorant for using resin and sample color, then you can calculate recipe.

It is available for select suitable recipe from list of metamerism and cost by colorant combination.

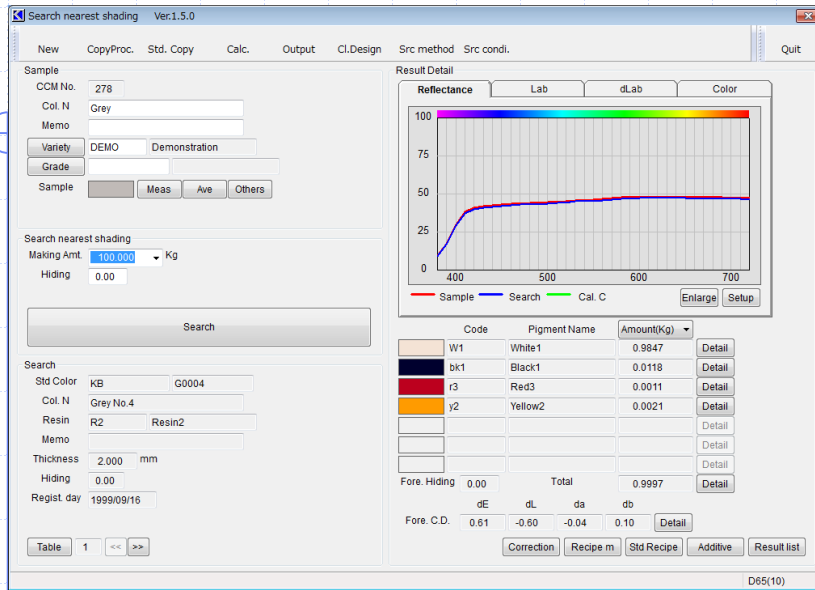
Also, in selection of colorant, you can focus on using colorant by registration the characteristic, such as light proof. (individual selection)

## Individual Setting



Furthermore, it has other functions which can calculate to fix additive for specific primary color, and automatically decide for additive regarding non-concealing sample, such as film etc.

# New color CCM(2)

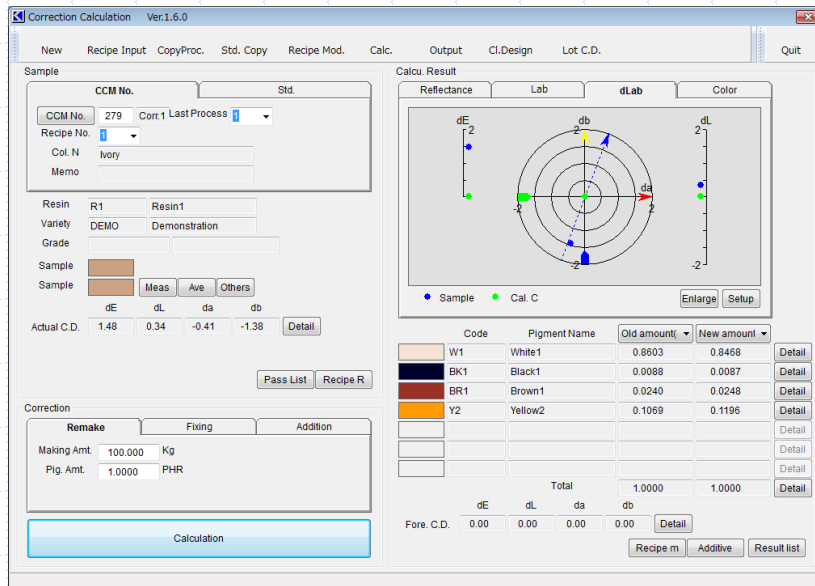


## Close color search

Search close color compared with sample in registered delivery lot color as a standard.

It is also available to search close recipe by specified resin grade and colorant which you want to use.

You can correction calculate from result of search, it can realize more accurate color.



## Correction calculation

It displays actual color difference compared making color by first CCM calculation or close color search with sample color.

If it is not within range of pass, correction calculate it. If is within range of pass, save in database by combination registration button.

Correction calculation has 3 modes. It is re-make, primary color fixed, and addition.



Compared making sample in standard recipe with basic color in registered as a standard, judge it is within range of pass or not.

If it is out within range of pass, correction calculate it. If it is within range of pass, register by combination registration button as a this lot color.

You can check the unevenness lot color by using magnified screen and also the record of color difference by using another windows.



# Quality control

## Standard color control

It saves color information of authorized sample and combination recipe. It can input standard and limit sample.

By each standard color, it is available to set in control standards for color judgment. In addition, customer and purpose of use can be saved.

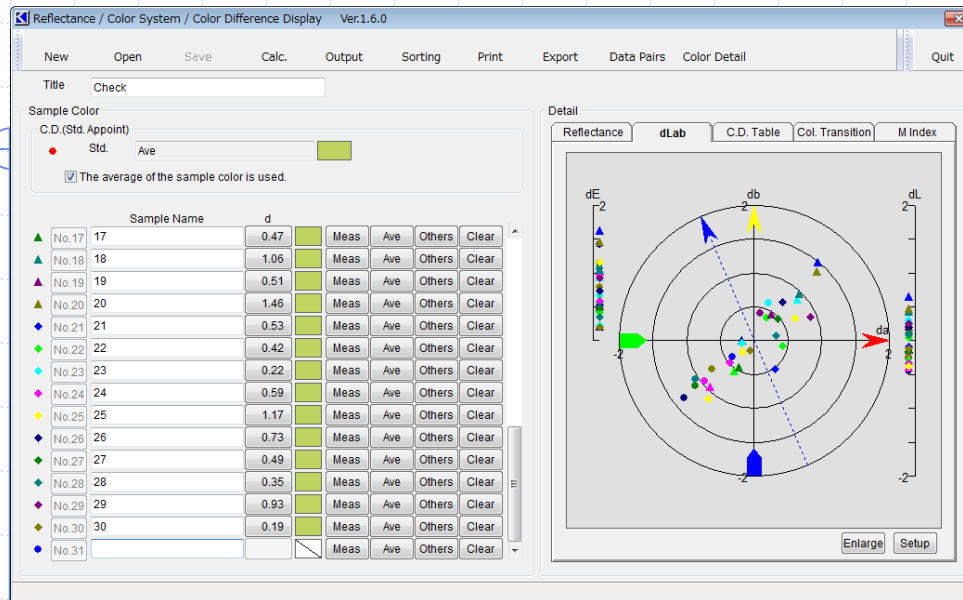
From correction calculation in new color CCM, it can be registered.

## Lot control

Judge for pass or not in control standards which is set by each standard color.

It displays on screen the record of past production lot. It can switch standards for lot color, then also display color difference from specified lot, it can realize advanced control.

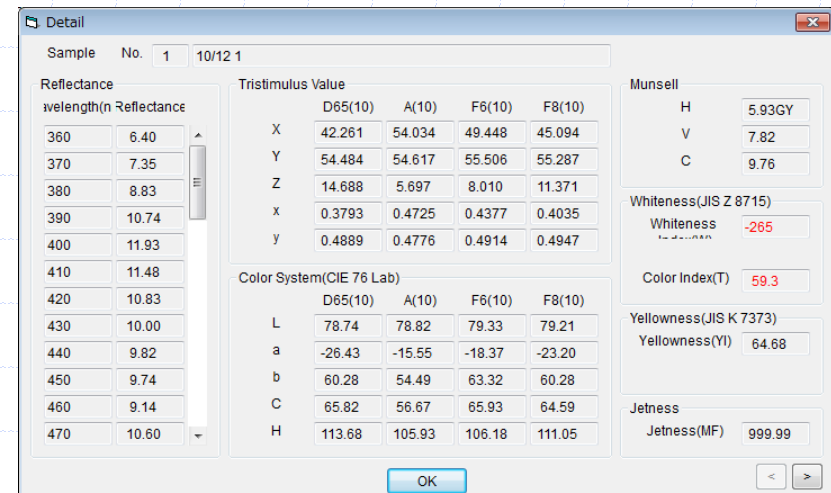
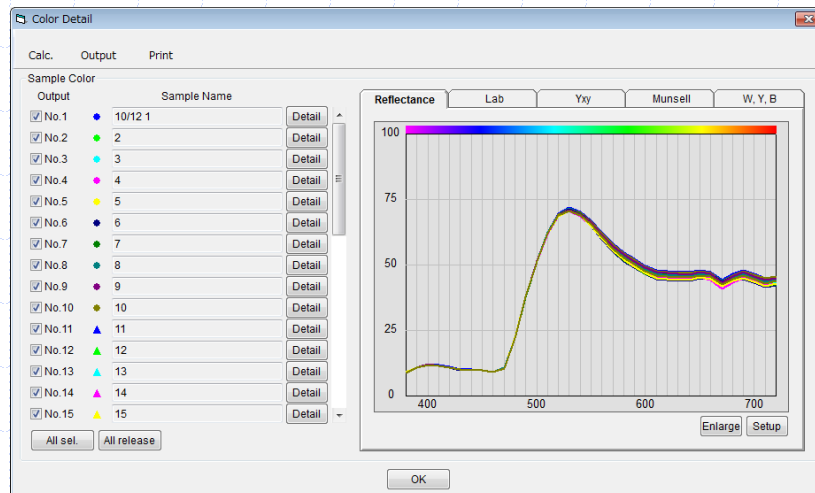
# Color control



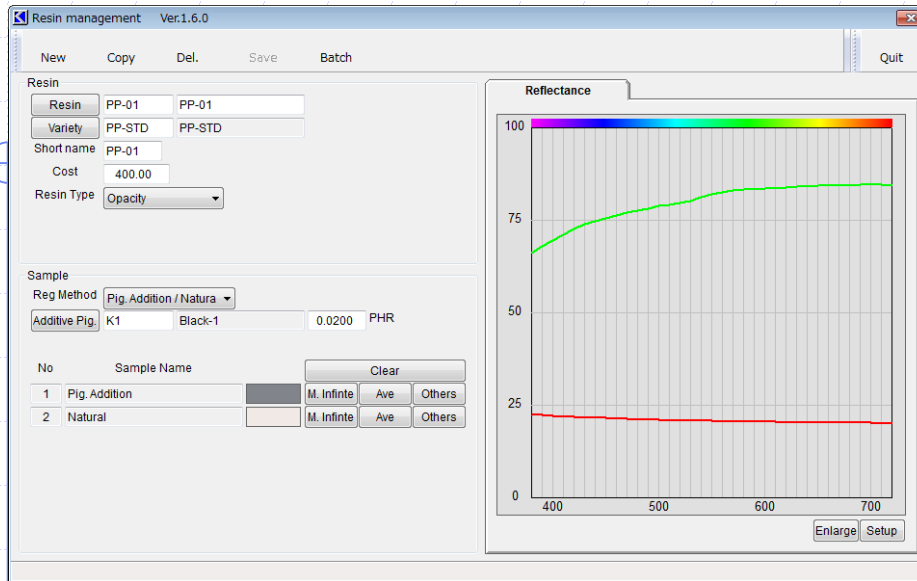
## Color difference calculation

You can apply to lot control of color difference and repeat color during CCM. It can save color matching data and compare with past data.

In color details data, it can display and output by graph and numerical data for reflectance, XYZ, Munsell value etc.



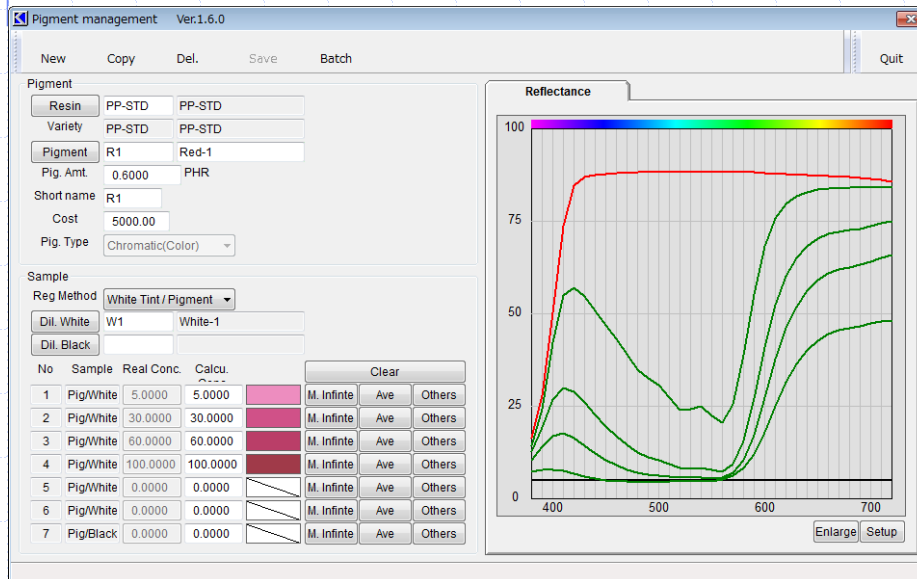
# Basic data control



## Resin control

In basic resin which is made colorant data, it is registered by kinds of resin, regarding other resins, it also can be registered.

Colorant data is made by one resin, other resins data is shifted.



## Primary color control

It controls colorant data which is basic for CCM calculation.

If new colorant increase, you can use in CCM calculation after additional registration .

## device component(Example)



- ◆ Personal computer main body ※PC specification are subject to change without notice.
  - CPU : Intel Core 3.3Ghz or other
  - Memory : 4.0GB
  - HDD : 500GB (with backup function)
  - OS : Windows10 64Bit Professional
- ◆ 17 inches Liquid crystal display
- ◆ A4 monochrome page Printer
- ◆ Spectrophotometer (Konicaminolta CM-3600A)

# Installation place

- ◆ Necessary Setting desk size  
(1200 × 700mm)
- ◆ Non-smoking・dust down place
- ◆ Temperature (20~30℃)
- ◆ Near from CCM workplace